

# Surge protection device - D-LAN-CAT.5E - 2858991


Please be informed that the data shown in this PDF Document is generated from our Online Catalog. Please find the complete data in the user's documentation. Our General Terms of Use for Downloads are valid (<http://phoenixcontact.com/download>)



RJ-45 attachment plug with surge protection for LAN interfaces for inserting in the data line, incl. RJ45 cable



## Key Commercial Data

Packing unit	1 STK
GTIN	 4 017918 920463
GTIN	4017918920463

## Technical data

### Dimensions

Height	94 mm
Width	25.4 mm
Depth	25.4 mm

### Ambient conditions

Ambient temperature (operation)	-40 °C ... 80 °C
Degree of protection	IP20

### General

Housing material	Aluminum, anodized
Color	black
Standards for clearances and creepage distances	DIN VDE 0110-1
	IEC 60664-1
Overvoltage category	II
Degree of pollution	2
Mounting type	Connection-specific intermediate plugging
Type	Attachment plug
Direction of action	Line-Line & Line-Shield & Shield-Earth Ground

# Surge protection device - D-LAN-CAT.5E - 2858991

## Technical data

### Protective circuit

IEC test classification	C1
	C2
	C3
	B2
	B3
VDE requirement class	C1
	C2
	C3
	B2
	B3
Maximum continuous voltage $U_c$	$\pm 7$ V DC
Rated current	1.5 A (25 °C)
Operating effective current $I_c$ at $U_c$	$\leq 100$ $\mu$ A
Residual current $I_{PE}$	$\leq 100$ $\mu$ A
Nominal discharge current $I_n$ (8/20) $\mu$ s (line-line)	350 A
Nominal discharge current $I_n$ (8/20) $\mu$ s (line-earth)	2.5 kA
Max. discharge current $I_{max}$ (8/20) $\mu$ s maximum (line-earth)	2.5 kA (in total)
Nominal pulse current $I_{an}$ (10/700) $\mu$ s (line-line)	160 A
Nominal pulse current $I_{an}$ (10/700) $\mu$ s (line-earth)	160 A
Output voltage limitation at 1 kV/ $\mu$ s (line-line) spike	$\leq 22$ V
Output voltage limitation at 1 kV/ $\mu$ s (line-earth) spike	$\leq 80$ V (equipotential bonding lead: 1 m)
Output voltage limitation at 1 kV/ $\mu$ s (shield-earth) spike	$\leq 700$ V (equipotential bonding lead: 1 m)
Residual voltage at $I_n$ (line-line)	$\leq 45$ V
Residual voltage at $I_n$ (line-earth)	$\leq 45$ V
Residual voltage at $I_n$ (shield-earth)	$\leq 700$ V
Voltage protection level $U_p$ (line-line)	$\leq 50$ V (C1 - 500 V / 250 A)
	$\leq 20$ V (B3 - 2 kV / 25 A)
Voltage protection level $U_p$ (line-earth)	$\leq 65$ V (C1, 500 V/250 A - PA-Ltg: 1 m)
	$\leq 25$ V (B3 - 2 kV / 25 A - PA-Ltg: 1 m)
	$\leq 60$ V (C3, 7 kV/90 A - PA-Ltg: 1 m)
Voltage protection level $U_p$ (shield-ground)	$\leq 850$ V (C2 - 4 kV/2 kA - PA-Ltg: 1 m)
Response time $t_A$ (line-line)	$\leq 500$ ns
Response time $t_A$ (line-earth)	$\leq 100$ ns
Input attenuation aE, sym.	1 dB (up to 100 MHz, 100 $\Omega$ system)
Near-end crosstalk attenuation	36 dB (pair 3-6 against pair 4-5 in 100 $\Omega$ system / 100 MHz)
	40 dB (all other pair combinations in 100 $\Omega$ system/100 MHz)
Cut-off frequency $f_g$ (3 dB), sym. in 100 Ohm system	$\leq 100$ MHz
Capacity (line-line)	20 pF (typical)
Capacity (line-earth)	1 pF (typical)
Surge protection fault message	none

# Surge protection device - D-LAN-CAT.5E - 2858991

## Technical data

### Protective circuit

Impulse durability (line-line)	B2 - 4 kV/100 A
	B3 (2 kV/25 A)
	C1 - 500 V / 250 A
Impulse durability (line-earth)	B2 - 4 kV/100 A
	C1 - 500 V / 250 A
	C2 - 4 kV/2 kA
	B3 (2 kV/25 A)

### Connection data

Connection method	RJ45
Connection method IN	RJ45 socket
Connection method OUT	RJ45 socket
Connection technology	Network interfaces (e.g. Ethernet, Token Ring and CDDI/FDDI)

### Connection, equipotential bonding

Connection method	Cable connection
-------------------	------------------

### Standards and Regulations

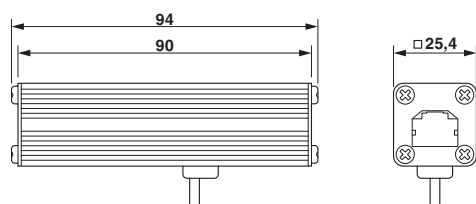
Standards/regulations	IEC 61643-21
	E VDE 0845-3-1
	DIN EN 50173-1

### Environmental Product Compliance

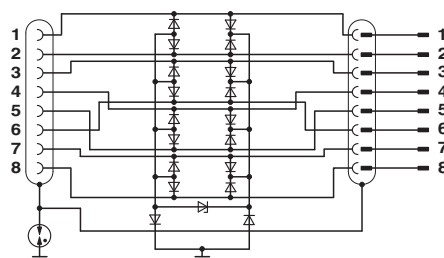
REACH SVHC	Lead 7439-92-1
China RoHS	Environmentally friendly use period: unlimited = EFUP-e
	No hazardous substances above threshold values

## Drawings

Dimensional drawing



Circuit diagram



## Approvals

Approvals

## Surge protection device - D-LAN-CAT.5E - 2858991

### Approvals

Approvals


UL Listed / EAC / EAC

---

Ex Approvals

---

### Approval details

UL Listed		<a href="http://database.ul.com/cgi-bin/XYV/template/LISEXT/1FRAME/index.htm">http://database.ul.com/cgi-bin/XYV/template/LISEXT/1FRAME/index.htm</a>	FILE E 138168
-----------	---	---	---------------

EAC		EAC-Zulassung
-----	---	---------------

EAC		RU C- DE.A*30.B01561
-----	---	-------------------------

---

Phoenix Contact 2018 © - all rights reserved  
<http://www.phoenixcontact.com>

PHOENIX CONTACT GmbH & Co. KG  
Flachsmarktstr. 8  
32825 Blomberg  
Germany  
Tel. +49 5235 300  
Fax +49 5235 3 41200  
<http://www.phoenixcontact.com>