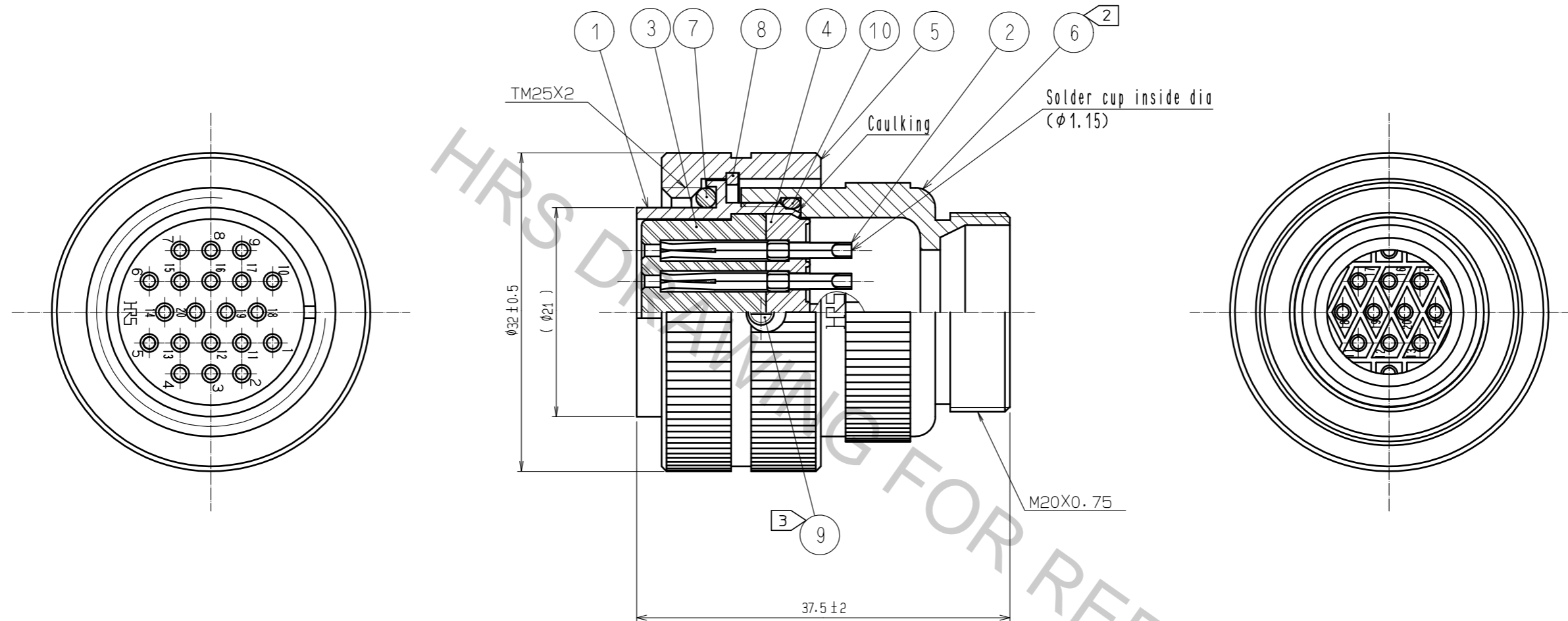


Aug.1.2018 Copyright 2018 HIROSE ELECTRIC CO., LTD. All Rights Reserved.  
 In case that the application demands a high level of reliability, such as automotive,  
 please contact a company representative for further information.



- NOTES
- 1 ONE EXAMPLE OF THE ROTATION OF REF. ⑥ TO REF. NO. ① IS SHOWN.
  - 2 THE RECOMMENDED TIGHTENING TORQUE OF REF. NO. ② SHALL BE 2 TO 3N · m.
  - 3 THE RECOMMENDED TIGHTENING TORQUE OF REF. NO. ③ SHALL BE 0.2 TO 0.3N · m.
  - 4 THIS PRODUCTS TO BE USED WITH CABLE CLAMP, RM21WTP-CP(+)(71).  
 \*DESIGNATE DIAMETER(mm) OF APPLICABLE CABLE.

NO.	MATERIAL	FINISH . REMARKS	NO.	MATERIAL	FINISH . REMARKS
5	BRASS	NICKEL PLATING	10	CHLOROPRENE RUBBER	(BLACK)
4	PPS	(BLACK) UL94V-0	9	BRASS	NICKEL PLATING
3	PPS	(BLACK) UL94V-0	8	PHOSPHOR BRONZE	NICKEL PLATING
2	COPPER ALLOY	SILVER PLATING 5μm min.	7	CHLOROPRENE RUBBER	(BLACK)
1	BRASS	NICKEL PLATING	6	BRASS	NICKEL PLATING

UNITS mm		SCALE 2 : 1	COUNT 	DESCRIPTION OF REVISIONS	DESIGNED	CHECKED	DATE
HIROSE ELECTRIC CO., LTD.				APPROVED : HY. KOBAYASHI 18.02.22 CHECKED : HY. KOBAYASHI 18.02.22 DESIGNED : HY. KISHI 18.02.22 DRAWN : MK. INOUE 18.02.08	DRAWING NO. EDC-110103-31-00 PART NO. RM21WTP-20S(31) CODE NO. CL109-1402-5-31		