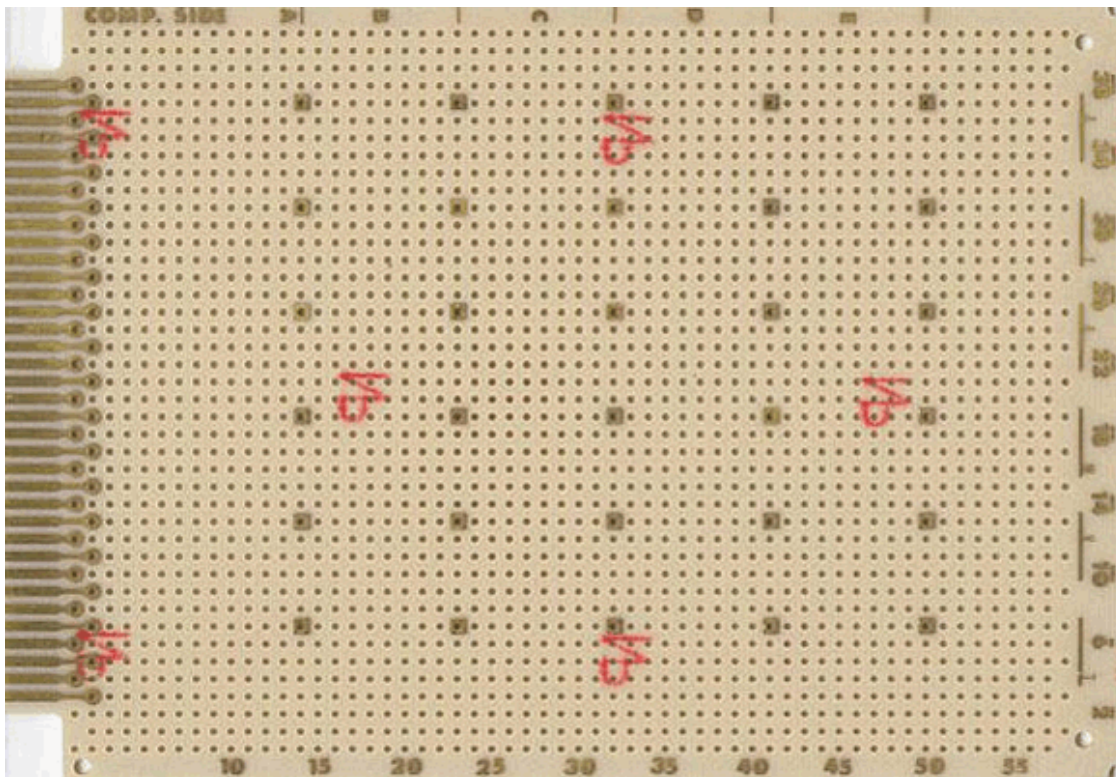


VECTORBORD® PLUGBORD™ PART NO. : 3719-1**Description :****4.5" X 6.5" X 0.062, Hole Dia.: 0.042", Grid: 0.100" X 0.100"****Contacts only****Unrestricted component placement over entire board surface****Row and column legends provided****Layout paper and instructions included**

Circuit Pattern :	Contacts only
Contacts :	36/72 @ 0.100" Centers Ni / Gold
16 Pin DIP Capacity :	50
Hole Diameter :	0.042" { 1.0668 mm }
Grid :	0.100" X 0.100" { 2.54mm X 2.54mm }
Dimension { H, W, T } :	4.5" X 6.5" X 0.062"
Material :	CEM-1
Wire-Wrap Terminals :	T44, T46, T49 & T68
Solder Connector :	R636-2
Wire-Wrap Socket Pins :	R32
Wire-Wrap Connector :	R636-1
Extender :	3690-4
Recommended Card Cage:	CCK 13 Series Card Cage { Subracks }
NEMA Grade :	CEM-1
UL Flammability Class :	94V - 0

11115 Vanowen St., North Hollywood, CA 91605, USA

Tel.: (818) 985 8208, (800) 423 5659; Fax : (818) 985 7708

**Circbord®, Vectorbord® and VectorPak® are registered trademarks of Vector Electronics & Technology, Inc.
CompactPCI® is a registered trademark of PCIMG. © 2001 Vector Electronics & Technology, Inc. - All Rights Reserved**