

# Brad® Direct-Link™ SW1000 Software

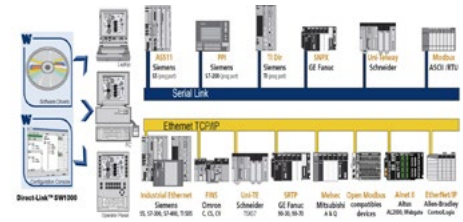
## EtherNet TCP/IP + Serial\*



### Direct-Link™ SW1000 software packages provide cost-effective, easy-to-use and reliable data exchange for industrial devices connected to Ethernet TCP/IP and Serial\* networks

Well adapted for embedded environments, Direct-Link™ SW1000 software packages are used by operator interface manufacturers and OEM equipment manufacturers needing to make their computerized systems communicate. Ideally suited for small and medium-sized applications with low time constraints, Direct-Link™ software solutions are widely adopted for technical management in the building sector, electrical installations, and Test and Measurement applications.

\*Serial networks are only supported on versions lower than 5.0



Direct-Link™ SW1000 Software Package

### Features and Benefits

Complete software package for Windows® PC-based applications (HMI, SCADA, MES, RDBM, custom developments, etc)

Enables fast integration of industrial communication into applications

Uses standard computer resources to collect data (Ethernet port, Serial COM ports)

Ideally suited for embedded and light architecture (laptops, panel PCs, operator interfaces and workstations)

Supports multi Ethernet TCP/IP protocols simultaneously

Economical and easy-to-use software

Available in Windows 32-bit and 64-bit (WoW64 subsystem)

Provides reliable data exchange with plant floor



### Protocols

**Ethernet TCP/IP** - All protocols can run simultaneously

Allen-Bradley – PCCC and Logix5000 messaging (for ControlLogix and FlexLogix)

Altus – Alnet II (AL2000 and Webgate series)

Alstom – SRTP (Alspa C80-35 and C80-75 Series)

GE Fanuc – SRTP (90-30 and 90-70 Series)

Mitsubishi – Melsec (A and Q Series)

Omron – FINS (C, CV and CS Series)

Schneider – Open Modbus TCP/UDP (Premium and Quantum Series)

Schneider – Uni-TE (Micro and Premium)

Siemens – Industrial Ethernet (S5, S7 and TI-505 Series)

Send/Rec on UDP

### Serial

Modbus ASCII & RTU

GE Fanuc – SNPX (90-xx and 80-xx Series)

Schneider – Uni-Telway (TSX 7 Series)

Siemens – AS511 (Simatic S5 Series)

Siemens – PPI/PPI+ (Simatic S7-200 series)

Siemens – Ti-Dir (Simatic TI-505 Series)

### Supported OS

Windows 32-bit and 64-bit (WoW64 subsystem)

2003 Server

2008 Server

Windows 7

Windows 8

Vista

Seven

### Data Servers

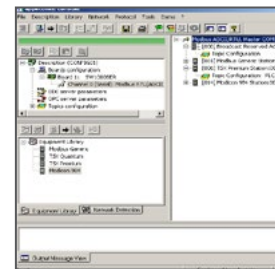
OPC DA v3.0, 2.05 and 1.0a

Wonderware I/O (SuiteLink/FastDDE)

Library DLL

2008 Server

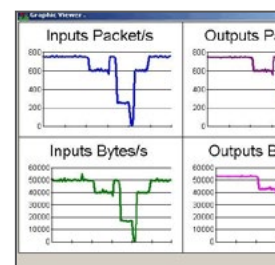
2012 Server



Configuration Software



OPC Browser



# Brad® Direct-Link™ SW1000 Software

EtherNet TCP/IP + Serial\*



## Ordering Information

Order No.	Engineering No.	Type of Protection	Tags	Protocols Included	Product Description
112027-0005	DRL-ALL-SWL-S	Software Key	Ethernet TCP/IP 1000 Tags + Serial Full Tags	All protocols and data servers	Direct-Link™ SW1000 software package
112027-0006	DRL-ALL-SWL-U	Dongle for USB Port			
112027-0002	DRL-ALL-SWF-S	Software Key	Ethernet TCP/IP Full Tags + Serial Full Tags	Siemens protocols (S5, S7, TI) and data servers	
112027-0003	DRL-ALL-SWF-U	Dongle for USB Port			
112027-5014	DRL-SIE-SWF-S	Software Key			
112027-5015	DRL-SIE-SWF-U	Dongle for USB Port			

EtherNet TCP/IP is a trademark of Open DeviceNet Vendor Association, Inc

Windows is a registered trademark of Microsoft Corporation

Allen-Bradley is a registered trademark of Rockwell Automation

Wonderware is a registered trademark of Invensys Systems, Inc.

The OPC Foundation Logo is a registered trademark of the OPC Foundation