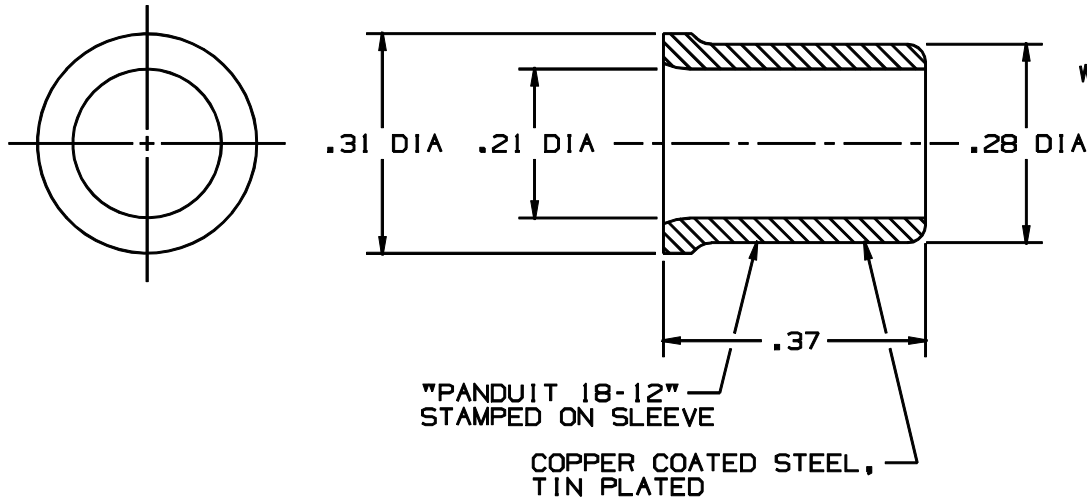


THIS COPY IS PROVIDED ON A RESTRICTED BASIS AND IS NOT TO BE USED IN ANY WAY DETRIMENTAL TO THE INTERESTS OF PANDUIT CORP.





WIRE COMBINATION CHART FOR WIRE JOINT J318-412

WIRE SIZE	NO. OF WIRES	NUMBER OF ADDITIONAL WIRES OF ONE SIZE				
		#18 AWG	#16 AWG	#14 AWG	#12 AWG	#10 AWG
#18 AWG	1	2 to 14	2 to 9	1 to 4	1 to 3	1
	2	1 to 13	1 to 8	1 to 4	1 to 3	0
	3	1 to 12	1 to 7	1 to 4	1 to 3	0
	4	1 to 11	1 to 6	1 to 4	1 to 3	0
	5	1 to 10	1 to 6	1 to 4	1 or 2	0
	6	1 to 9	1 to 6	1 to 3	1 or 2	0
	7	1 to 8	1 to 4	1 or 2	1	0
	8	1 to 7	1 to 3	1 or 2	1	0
	9	1 to 6	1 to 3	1	0	0
	10	1 to 5	1 or 2	0	0	0
	11	1 to 4	1	0	0	0
	12	1 to 3	0	0	0	0
	13	1 or 2	0	0	0	0
	14	1	0	0	0	0
#16 AWG	1	2 to 11	1 to 9	1 to 5	1 to 3	0
	2	1 to 10	1 to 8	1 to 5	1 to 3	0
	3	1 to 9	1 to 7	1 to 3	1 or 2	0
	4	1 to 7	1 to 6	1 to 3	1 or 2	0
	5	1 to 6	1 to 5	1 to 3	1 or 2	0
	6	1 to 6	1 to 4	1 or 2	1	0
	7	1 to 3	1 to 3	1	0	0
	8	1 or 2	1 or 2	0	0	0
	9	1	1	0	0	0
#14 AWG	1	1 to 9	1 to 7	1 to 5	1 to 3	0
	2	1 to 8	1 to 6	1 to 4	1 or 2	0
	3	1 to 6	1 to 5	1 to 3	1	0
	4	1 to 5	1 or 2	1 or 2	1	0
	5	0	1 or 2	1	0	0
#12 AWG	1	1 to 8	1 to 6	1 to 4	1 to 3	2
	2	1 to 6	1 to 5	1 or 2	1 or 2	0
	3	1 to 4	1 or 2	1	1	0
#10 AWG	1	1	0	0	0	1
	2	0	0	0	1	0

CIRCULAR MIL RANGE: 4860-27330


NOTES:

1. RECOMMENDED TOOL - CT-100 OR CT-200
2. FOR SOLID OR STRANDED COPPER WIRE
3. COMBINATIONS: #18 AWG- #10 AWG
4. TWIST WIRES TOGETHER BEFORE ASSEMBLING TO WIRE JOINT.
5. PACKAGE QTY.: -T = 200 (STD)
-2M = 2000 (BULK)
6. WIRE STRIP LENGTH: $1/2" + \frac{1}{32}$
-0

7.  LISTED, 587H E52164  CERTIFIED LR-31212

TOLERANCES ±.03

A41005_04

4	1/01	SAB		FILE SPEC WAS N41005AA_PCD_03							 TINLEY PARK, ILLINOIS NON-INSULATED WIRE JOINT J318-412		
3	8/96	JB		ORIGINAL FILE SPEC WAS A41005.2 ADDED AND UPDATED NOTES									
2	1/88	CK		ADDED COPPER WIRE, AND CERTIFIED									
1	9-87	DM		MAT'L WAS STEEL / REDRAWN ON CAD									
REV	DATE	BY	CHK	DESCRIPTION	ECN	PM	CUST	SUP	APP	DRAWN BY DSM	CHK'D	SCALE 4X	DRAWING NO. A41005