

4840, Cable, Plug, 5.5 mm, 2-pole, DC Plug/Socket



Approvals and Compliances

Description

- pre-assembled cable
- Low Voltage DC Plug and Socket
- DC Plug: 2-pole , angled

Technical Data




Diameter	5.5 mm / 2.5 mm	Allowable Operation Temperature	-20 °C to 70 °C
Number of Poles	2-pole	Terminal	Cable
Ratings DC	1.0A / 12VDC	Cord Length	1.8 m
Dielectric Strength	500VDC	Cable Cross Section	2 x 0.3 mm ²
Insulation Resistance	> 100 MΩ @ 500VDC	Style	angled
		Lifetime	5000 Insertions

Approvals and Compliances

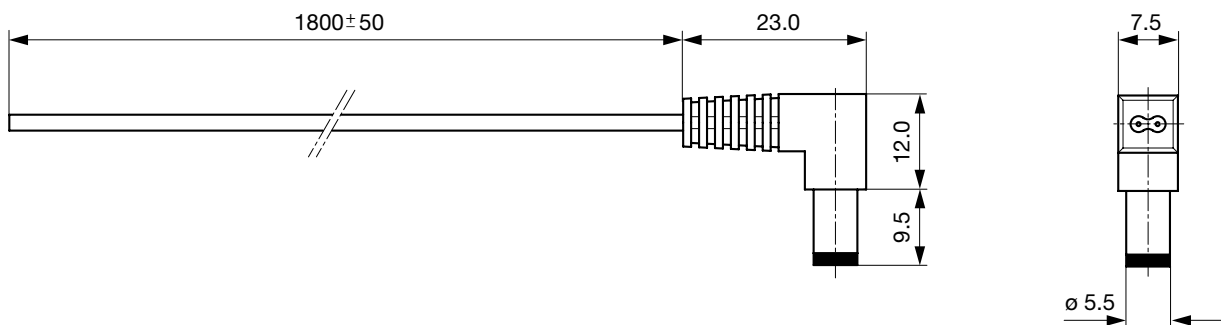
Detailed information on product approvals, code requirements, usage instructions and detailed test conditions can be looked up in [Details about Approvals](#)

Compliances

The product complies with following Guide Lines

Identification	Details	Initiator	Description
	RoHS	SCHURTER AG	EU Directive RoHS 2011/65/EU
	China RoHS	SCHURTER AG	The law SJ / T 11363-2006 (China RoHS) has been in force since 1 March 2007. It is similar to the EU directive RoHS.
	REACH	SCHURTER AG	On 1 June 2007, Regulation (EC) No 1907/2006 on the Registration, Evaluation, Authorization and Restriction of Chemicals 1 (abbreviated as "REACH") entered into force.

Dimensions [mm]



All Variants

Product group	Diameter [mm]	Number of Poles	Terminal	Order Number
DC Plug/Socket	5.5	2-pole	Cable	4840.5211

Availability for all products can be searched real-time: <https://www.schurter.com/en/Stock-Check/Stock-Check-SCHURTER>

Packaging unit 200 Pcs

Mating Outlets/Connectors

Category / Description



[DC Plug/Socket Overview complete](#)

4840, solder terminal, Socket, 6.3 mm, 2-pole, DC Plug/Socket [4840.2210](#)

4840, PCB terminals, Socket, 6.0 mm, 2-pole, DC Plug/Socket [4840.2211](#)

[DC Plug/Socket further types to 4840.5211](#)