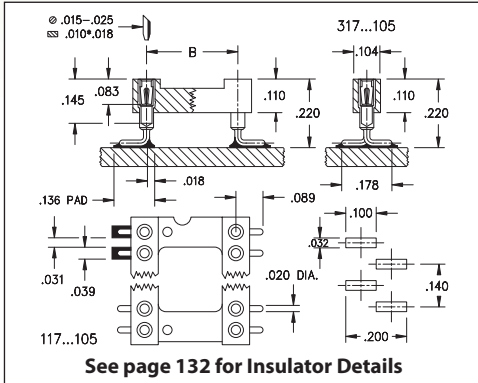
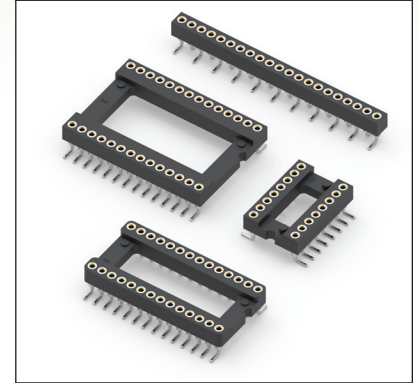


DUAL-IN-LINE SOCKETS

SERIES 117, 317 • GULL WING SHRINK DIP SOCKETS & STRIPS, SMT SOLDER TAIL



- Surface mount Gull Wing DIP & strip sockets for devices featuring .070" lead spacing
- Gull wing terminals provide maximum strength and permit easy visual inspection of solder joints
- Hi-Rel, 4-finger BeCu #30 contact is rated at 3 amps. See page 253 for details
- Series 117 and 317 use MM #1802 pins. See page 169 for details
- Insulators are high temperature thermoplastic, suitable for all soldering operations
- For Electrical, Mechanical and Environmental Data, see page 264 for details



Total number of pins	Pin Spacing Dimensions			Quantity per tube	ORDERING INFORMATION				
	A	B	C						
16	0.572	0.3	0.39	35	117-XX-316-41-105000				
28	0.992	0.4	0.49	20	117-XX-428-41-105000				
30	1.062	0.4	0.49	18	117-XX-430-41-105000				
48	1.692	0.4	0.49	12	117-XX-448-41-105000				
20	0.712	0.6	0.69	28	117-XX-620-41-105000				
28	0.992	0.6	0.69	20	117-XX-628-41-105000				
40	1.412	0.6	0.69	14	117-XX-640-41-105000				
42	1.482	0.6	0.69	13	117-XX-642-41-105000				
48	1.692	0.6	0.69	12	117-XX-648-41-105000				
52	1.832	0.6	0.69	11	117-XX-652-41-105000				
56	1.972	0.6	0.69	10	117-XX-656-41-105000				
64	2.252	0.6	0.69	9	117-XX-664-41-105000				
68	2.392	0.6	0.69	8	117-XX-668-41-105000				
64	2.252	0.75	0.84	8	117-XX-764-41-105000				
					SINGLE ROW STRIP SOCKET If desired, we will supply any length up to 21 pins.				
21	1.482	---	.104	-	317-XX-121-41-105000				
See page 264 for coplanarity information					SPECIFY PLATING CODE XX=				
					Sleeve (Pin)		91	41	43
					Contact (Clip)		200 μ" Sn/Pb	200 μ" Sn	200 μ" Sn
		10 μ" Au	10 μ" Au	30 μ" Au					

XX=Plating Code
See Below

RoHS-2
2011/65/EU