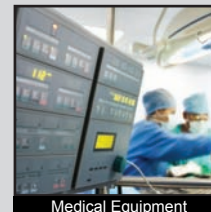
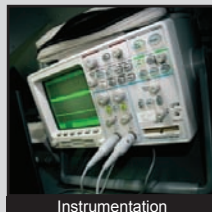
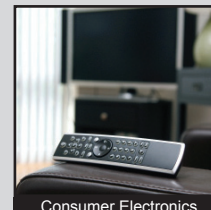
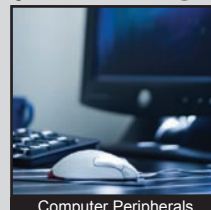
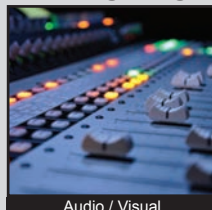


TL3901 SERIES TACT SWITCH

ANTI-VANDAL SWITCHES
 DETECTOR SWITCHES
 DIP SWITCHES
 KEYLOCK SWITCHES
 NAVIGATION SWITCHES
 PUSHBUTTON SWITCHES
 ROCKER SWITCHES
 ROTARY SWITCHES
 SLIDE SWITCHES
 SNAP ACTION SWITCHES
TACTILE SWITCHES
 TOGGLE SWITCHES
 CAP OPTIONS



APPLICATIONS / MARKETS



RoHS

SPECIFICATIONS

Electrical Rating: 50mA @ 12VDC
Life Expectancy: 50,000 Cycles
Contact Resistance: 500mΩ Max.
Insulation Resistance: 100 MΩ Min. at 500VDC
Dielectric Strength: 250VAC for 1 min.
Operating Temperature: -40°C to 85°C
Storage Temperature: -40°C to 85°C
Operating Force: 180 +80/-40 gf
Travel: 0.3mm +/- 0.15mm
Contact Arrangement: SPST, Normally Open

FEATURES & BENEFITS

- Right angle SMT
- Tape & Reel packaging: 2,000 pieces per reel
- Unique design allows PC board edge mounting
- Subminiature package size

PART NUMBER CONFIGURATOR

Series	Model	Mounting	Termination	Contact Material	Operating Force
<input type="text" value="TL"/>	<input type="text" value="3901"/>	<input type="text" value="A - With Mounting Bosses"/>	<input type="text" value="G - Gull Wing"/>	<input type="text" value="Q - Silver"/>	<input type="text" value="F180 - 180 gf"/>

Specifications subject to change without notice



E-SWITCH®

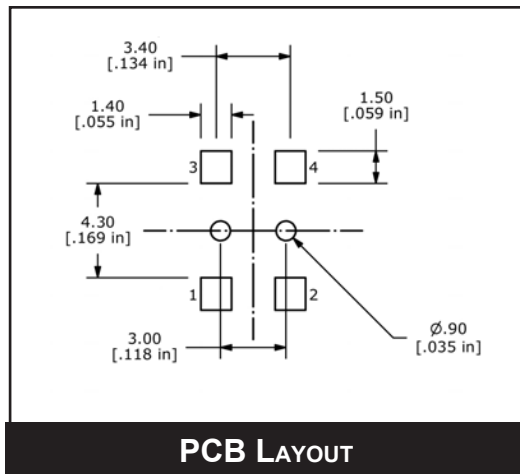
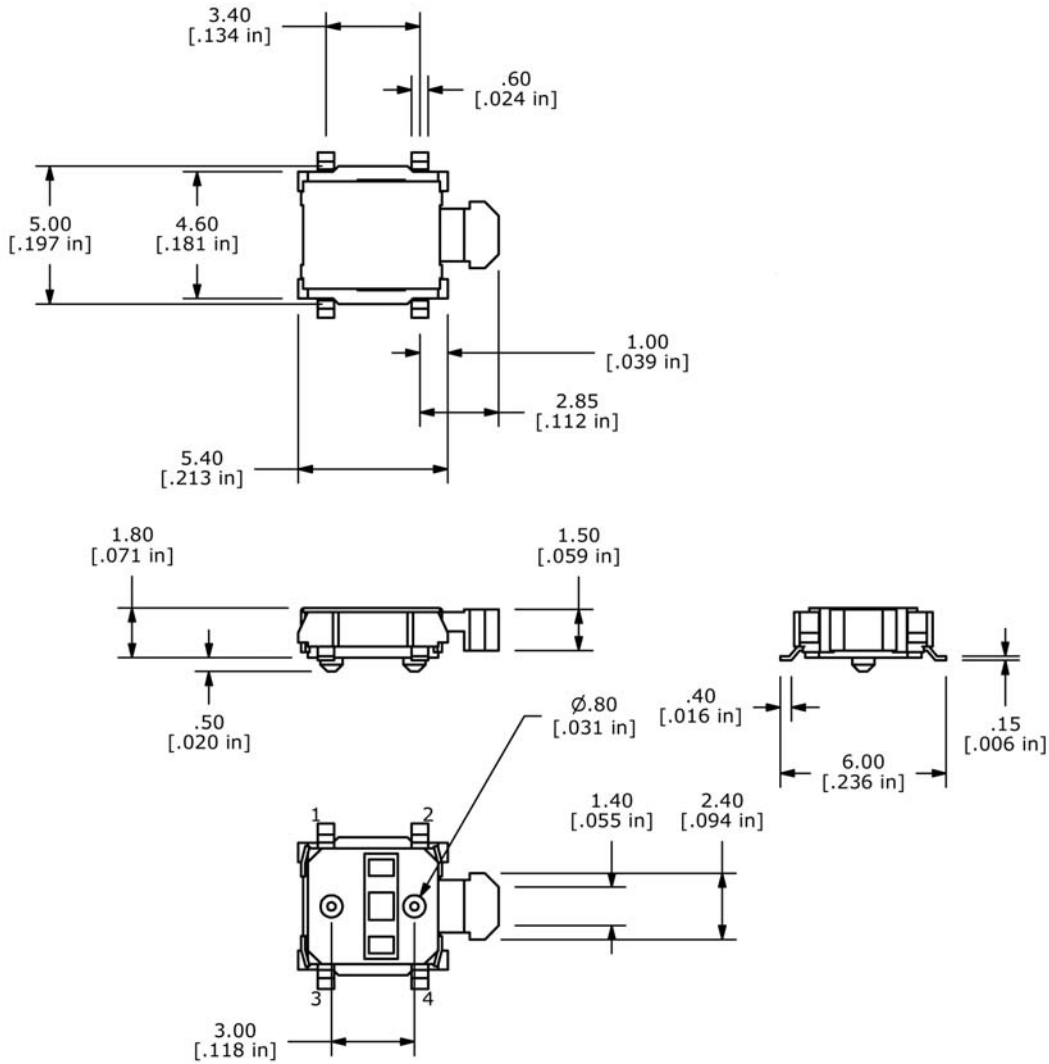
www.e-switch.com

800.867.2717

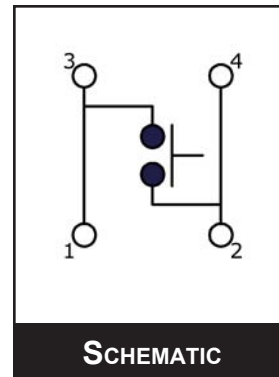
2

TL3901 SERIES TACT SWITCH

BODY DIMENSIONS



PCB LAYOUT



SCHEMATIC

- ANTI-VANDAL SWITCHES
- DETECTOR SWITCHES
- DIP SWITCHES
- KEYLOCK SWITCHES
- NAVIGATION SWITCHES
- PUSHBUTTON SWITCHES
- ROCKER SWITCHES
- ROTARY SWITCHES
- SLIDE SWITCHES
- SNAP ACTION SWITCHES
- TACTILE SWITCHES
- TOGGLE SWITCHES
- CAP OPTIONS

