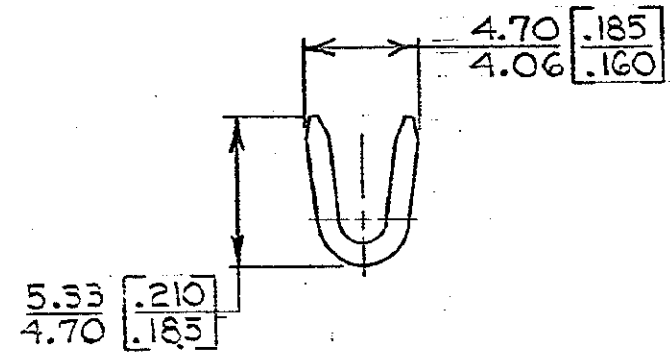
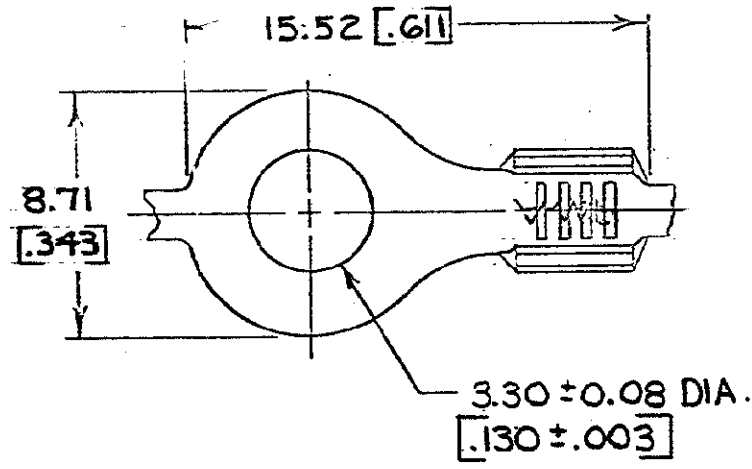
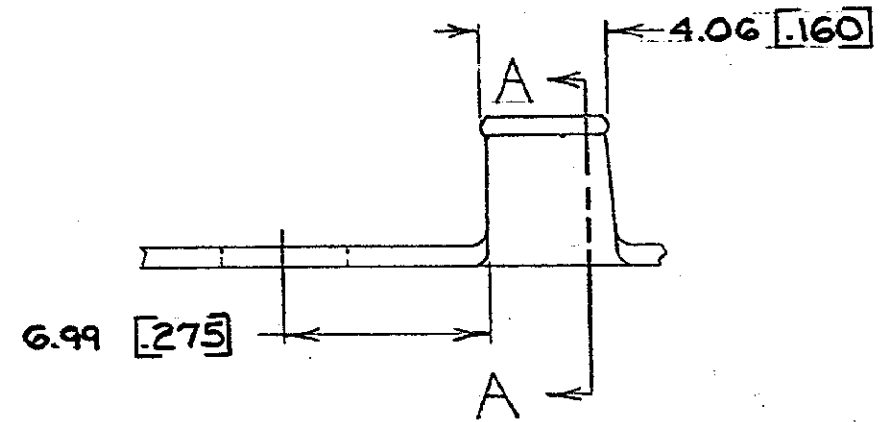


© COPYRIGHT 1965 BY AMP INCORPORATED, HARRISBURG, PA.
 ALL INTERNATIONAL RIGHTS RESERVED. AMP INCORPORATED PRODUCTS
 COVERED BY U. S. AND FOREIGN PATENTS AND/OR PATENTS PENDING.

		REVISIONS			LOC	DIST
P	F	ZONE	LTR	DESCRIPTION	DATE	APPROVED
✓	✓		S	REDRAWN & REVISED	4/20/78	PMF
✓	✓		T	OBS. -1 PER AF-4502	4/29/88	JT
✓	✓		U	REACT PER AF-6194	7/13/89	PMF/64
✓	✓		V	REV PER AF-6785	7/5/90	PMF/64



SECT A-A



1. CONTINUOUS STRIP, ON REELS.
 2. DIMENSIONS IN BRACKETS ARE IN INCHES.

METRIC

STUD SIZE	0.8 - 2.0 mm ² [18-14]	FINISH	TIN	MATERIAL	0.76 [0.030] BRASS	PART NO.	60505-1
UNLESS OTHERWISE SPECIFIED DIMENSIONS ARE IN <u>mm</u>		CONTRACT NO.		AMP INCORPORATED Harrisburg, Pa.			
TOLERANCES ON:		DR		NAME			
DECIMALS ±0.38 [0.015]		CHK		RING			
ANGLES ±1°		APPD		SIZE			
MATERIAL		APPD		CODE IDENT NO			
SEE TABLE		APPD		DRAWING NO			
FINISH		OTHER APPD		SCALE			
SEE TABLE				SHEET			