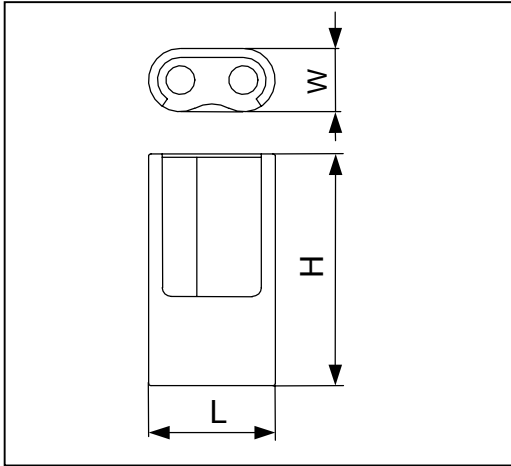


# Cell Type CR-V3 Specifications



Nominal Capacity <sup>*1</sup>		3300mAh
Nominal Voltage		3V
Standard Charge/Discharge Current		20mA
Max. Discharge Current	Continuous <sup>*2</sup>	3500mA
	Pulse <sup>*3</sup>	7000mA
Temperature Range		-40°C ~ 60°C
Weight		38g
Dimensions	L	29.0mm
	W	14.5mm
	H	52.0mm

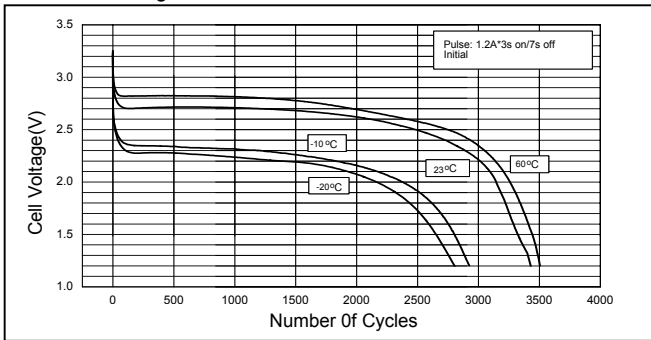
\*1 Nominal capacity is determined to an end voltage of 2.0V when the battery is allowed to discharge at a standard current level at 23°C.

\*2 Current value is determined to be the level at which 50% of the nominal capacity is obtained with an end voltage of 2.0V at 23°C.

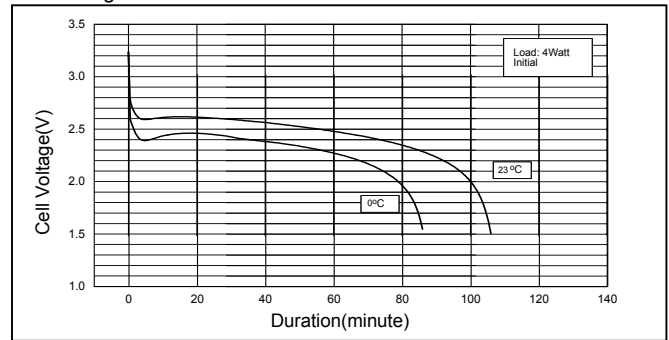
\*3 Current value for obtaining 1.0V cell voltage when pulse is applied for 15seconds at 50% discharge depth at 23°C.

## Typical Characteristics

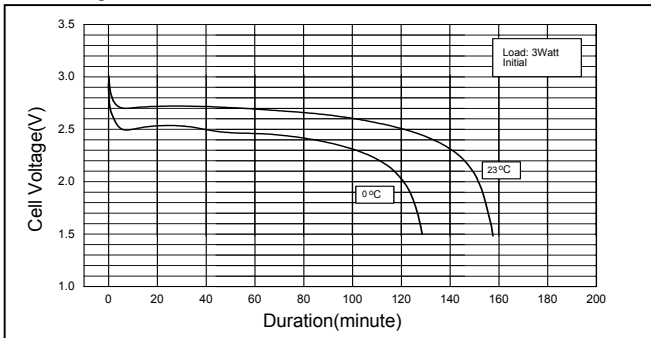
Pulse Discharge Characteristics of CR-V3



Discharge Characteristics of CR-V3



Discharge Characteristics of CR-V3



Discharge Characteristics of CR-V3

