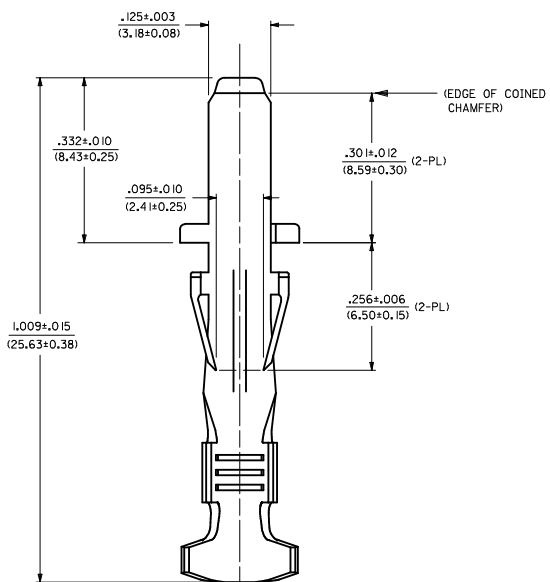
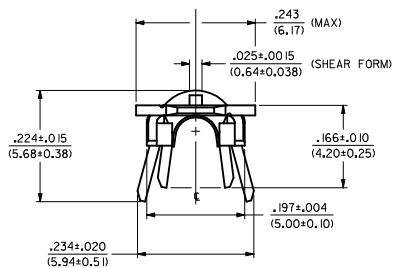
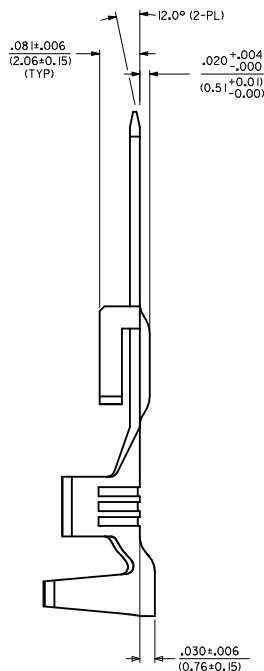


MATERIAL NUMBER	FINISH
43178-6001	999
43178-6002	H901
43178-6003	F542



LARGE INSULATION CRIMP



NOTES

- MATERIAL: BRASS
- FINISH:
999 - UNPLATED
H901 - 20 MICROINCH MIN. HOT TIN DIP
F542 - 15 MICROINCH MIN. SELECT GOLD IN CONTACT AREA,
50 MICROINCH TIN-LEAD IN CRIMP AREA,
NICKEL UNDERPLATE OVERALL.
- PRODUCT SPECIFICATION : PSX-44441-9999.
- TERMINAL FOR USE WITH SINGLE 14-16 AWG. UL 1007 OR 1015 STYLE WIRE.
- TERMINAL MEETS SPACING REQUIREMENTS OF UL1950 WHEN USED WITH 43680 SABRE SERIES PLUG HOUSINGS.

CHANGE WIRE RANGE EC NO. UCP2012-3061 DRAWN: AELHAG 2012/03/16 CHYK: JRELL 2012/03/16 APPR: FSWTH 2012/04/13 REV: A1	QUALITY SYMBOLS	GENERAL TOLERANCES (UNLESS SPECIFIED)	DIMENSION STYLE	SCALE	DESIGN UNITS	THIRD ANGLE PROJECTION	
	∇=0 ∇=0 ∇=0	mm INCH 4 PLACES ± --- ± --- 3 PLACES ± --- ± .010 2 PLACES ± 0.25 ± .014 1 PLACE ± 0.35 ± --- 0 PLACE ± ±	IN/MM	1:1	INCH	DRAWN BY DATE BW 2002/06/27 CHECKED BY DATE BW 2002/06/27 APPROVED BY DATE	TITLE TERM, CRIMP TAB, UL 1950 .125/(3.18)X.020/(0.51) 14-16 AWG, SABRE
	ANGULAR ±1/2° DRAFT WHERE APPLICABLE MUST REMAIN WITHIN DIMENSIONS	MATERIAL NO.	DOCUMENT NO.	SHEET NO. 1 OF 1		SEE CHART SD-43178-6***	
	SIZE D	THIS DRAWING CONTAINS INFORMATION THAT IS PROPRIETARY TO MOLEX INCORPORATED AND SHOULD NOT BE USED WITHOUT WRITTEN PERMISSION					