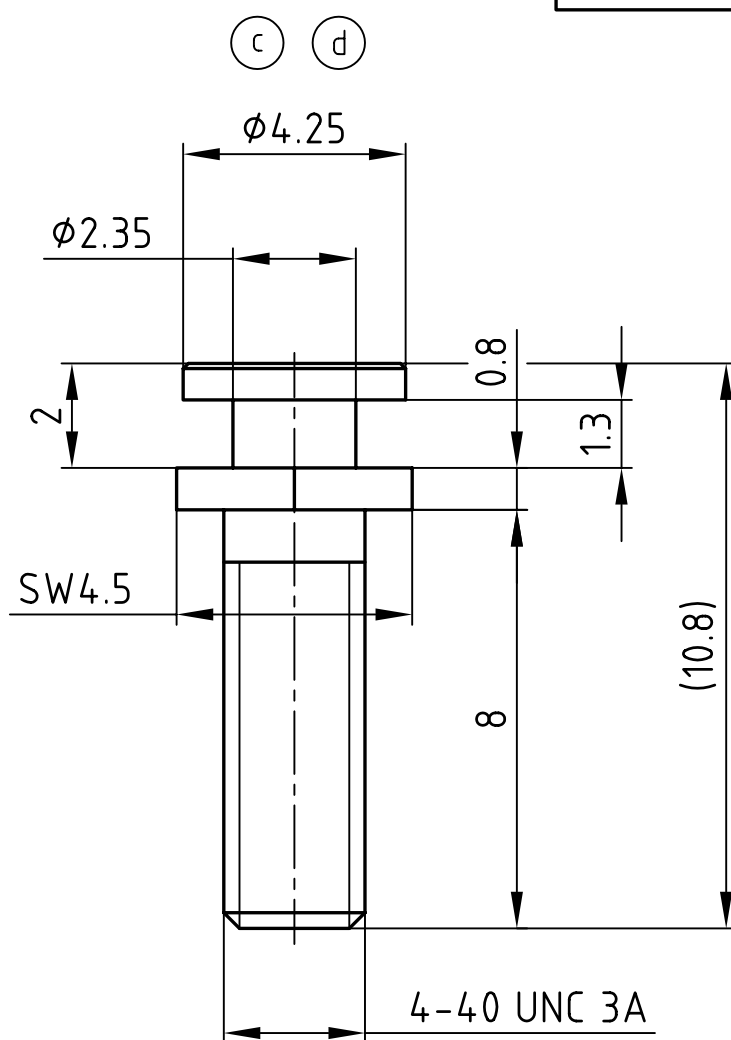
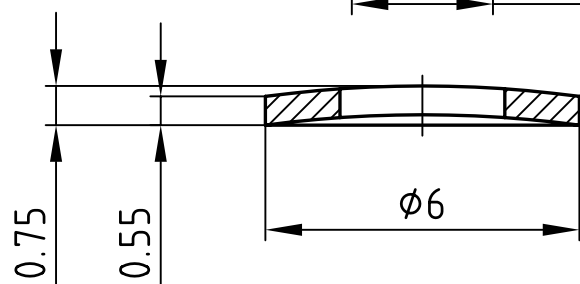


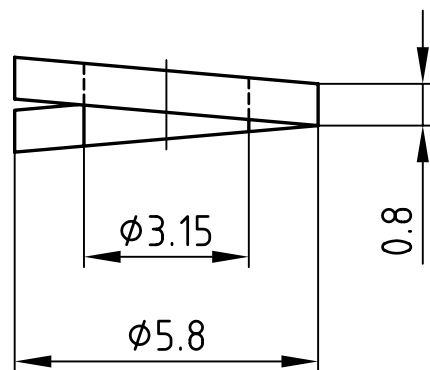
used for: D-SUB



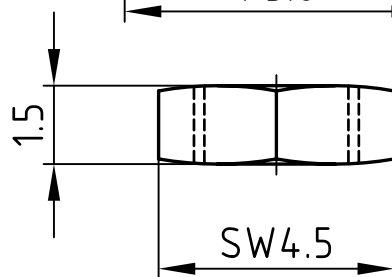
(b) LOCKING SCREW



WASHER



SPRING WASHER



NUT

- 1 SET CONSISTS OF:  
 2 x LOCKING SCREW  
 2 x NUT  
 4 x WASHER  
 2 x SPRING WASHER

APPROVAL # FREIGABE # DEBLOCAGE # AUTORIZACION # APPROVAL	
CUSTOMER APPROVAL DATE:	
NAME:	TITLE:
COMPANY NAME:	
APPROVAL # FREIGABE # DEBLOCAGE # AUTORIZACION # APPROVAL	



- NOTES:  
 1. LOCKING SCREW: 4-7µm Sn over 2-3µm Cu  
 2. NUT: 4-7µm Sn over 2-3µm Cu  
 3. WASHER: 4-7µm Sn over 2-3µm Cu  
 4. SPRING WASHER: 4-7µm Sn over 2-3µm Cu

THIS DRAWING MAY NOT BE COPIED OR REPRODUCED IN ANY WAY, AND MAY NOT BE PASSED ON TO A THIRD PARTY WITHOUT WRITTEN PERMISSION.  
 OWNERSHIP AND COPYRIGHT OF CONEC GmbH  
 DO NOT ALTER CAD DRAWING BY HAND

tolerance			DIN ISO 2768-m			dim. in mm		
1995	date	name	scale: 5:1					
drawn	18.07.	Mickenbecker	material: 9SMnPb28K					
appd.	18.07.	Barcinski	title: LOCKING SCREW with accessory D-SUB 9-50pos.					
1 x d	Ä 3365	02.06.2009	Lehmen.	dwg no: AutoCAD 2006				
1 x c	Ä 2689	20.03.2007	E. Mick.	DIN-A 4				
1 x b	Ä 2535	18.07.2006	Lehmen.	sh: 1/1				
a	Origin			part no: 16V1M7A				
rev.	description	date	name	part no: 160X10209X				

