

PCB terminal block - PTQ 0,3/ 2-2,5-L THR R32 - 1703375

Please be informed that the data shown in this PDF Document is generated from our Online Catalog. Please find the complete data in the user's documentation. Our General Terms of Use for Downloads are valid (<http://download.phoenixcontact.com>)



PCB terminal block, Nominal current: 4 A, Nom. voltage: 160 V, Pitch: 2.5 mm, Number of positions: 2, Connection method: Insulation displacement connection QUICKON, Mounting: SMD/THT/THR, Conductor/PCB connection direction: 0 °, Color: black



Key commercial data

Packing unit	1 pc
Minimum order quantity	250 pc
Weight per Piece (excluding packing)	2.57 GRM
Custom tariff number	85369010
Country of origin	Germany

Technical data

Dimensions

Length	17.55 mm
Height	8 mm
Width	7 mm
Pitch	2.5 mm
Dimension a	2.5 mm
Pin dimensions	0,9 x 0,4
Pin spacing	2.5 mm
Hole diameter	1.1 mm

General

Range of articles	PTQ 0,3/..-THR
Insulating material group	IIIa
Rated surge voltage (III/3)	2.5 kV
Rated surge voltage (III/2)	2.5 kV
Rated surge voltage (II/2)	2.5 kV

PCB terminal block - PTQ 0,3/ 2-2,5-L THR R32 - 1703375

Technical data

General

Rated voltage (III/3)	160 V
Rated voltage (III/2)	160 V
Rated voltage (II/2)	200 V
Nominal current I _N	4 A
Nominal cross section	0.34 mm ²
Maximum load current	4 A
Insulating material	LCP
Solder pin surface	Sn
Inflammability class according to UL 94	V0
Number of positions	2

Connection data

Conductor cross section solid min.	0.14 mm ²
Conductor cross section solid max.	0.34 mm ²
Conductor cross section stranded min.	0.14 mm ²
Conductor cross section stranded max.	0.34 mm ²
Conductor cross section AWG/kcmil min.	26
Conductor cross section AWG/kcmil max	22
Maximum AWG according to UL/CUL	24

Classifications

eCl@ss

eCl@ss 4.0	272607xx
eCl@ss 4.1	27141109
eCl@ss 5.0	27141190
eCl@ss 5.1	27141190
eCl@ss 6.0	27261101
eCl@ss 7.0	27440401
eCl@ss 8.0	27440401

ETIM

ETIM 3.0	EC001121
ETIM 4.0	EC002637
ETIM 5.0	EC002643

UNSPSC

UNSPSC 6.01	30211801
-------------	----------

PCB terminal block - PTQ 0,3/ 2-2,5-L THR R32 - 1703375

Classifications

UNSPSC

UNSPSC 7.0901	39121432
UNSPSC 11	34131203
UNSPSC 12.01	39121432
UNSPSC 13.2	39121432

Approvals

Approvals


Approvals


UL Recognized / VDE Gutachten mit Fertigungsüberwachung / cUL Recognized / CCA / IECCEB Scheme / cULus Recognized

Ex Approvals

Approvals submitted

Approval details

UL Recognized 	
	B
mm ² /AWG/kcmil	24
Nominal current I _N	2 A
Nominal voltage U _N	150 V

VDE Gutachten mit Fertigungsüberwachung 	
Nominal current I _N	4 A
Nominal voltage U _N	130 V

PCB terminal block - PTQ 0,3/ 2-2,5-L THR R32 - 1703375

Approvals

cUL Recognized	
	B
mm ² /AWG/kcmil	24
Nominal current I _N	2 A
Nominal voltage U _N	150 V

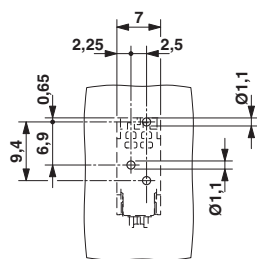
CCA	
mm ² /AWG/kcmil	0.2-2.5
Nominal current I _N	4 A
Nominal voltage U _N	130 V

IECEE CB Scheme	
mm ² /AWG/kcmil	0.2-2.5
Nominal current I _N	4 A
Nominal voltage U _N	130 V

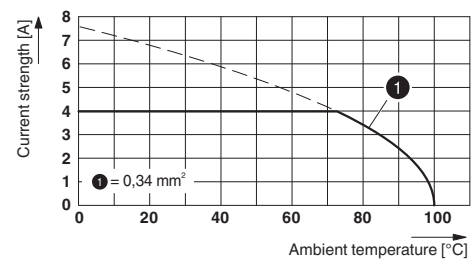
cULus Recognized	
------------------	--

Drawings

Drilling diagram



Diagram



Type: PTQ 0,3/..-2,5(-L) THR R32

PCB terminal block - PTQ 0,3/ 2-2,5-L THR R32 - 1703375

Dimensioned drawing

