

Sensor/Actuator cable - SAC-3P-M12MS/0,6-240/BI-1L-Z - 1438723

Please be informed that the data shown in this PDF Document is generated from our Online Catalog. Please find the complete data in the user's documentation. Our General Terms of Use for Downloads are valid (<http://phoenixcontact.com/download>)




Sensor/Actuator cable, 3-position, PUR halogen-free, yellow, Plug straight M12, A-coded, on Valve connector BI (11 mm), with 1 LED, connected with Z diode, Cable length: 0.6 m

The illustration shows the SPEEDCON version with a black conductor



Key Commercial Data

Packing unit	1 STK
Minimum order quantity	25 STK
GTIN	 4 046356 496698
GTIN	4046356496698

Technical data

Dimensions

Length of cable	0.6 m
-----------------	-------

Ambient conditions

Degree of protection	IP65
	IP67

General

Rated current at 40°C	4 A
Rated voltage	24 V
Number of positions	3
Insulation resistance	≥ 100 MΩ
Coding	A - standard
Status display	1 LED
Protective circuit/component	Z diode
Overvoltage category	III
Degree of pollution	3

Sensor/Actuator cable - SAC-3P-M12MS/0,6-240/BI-1L-Z - 1438723

Technical data

General

Insertion/withdrawal cycles	≥ 100
-----------------------------	-------

Material

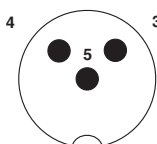
Flammability rating according to UL 94	HB
Contact material	CuSn
Contact surface material	Ni/Au
Contact carrier material	TPU GF
Material of grip body	TPU
Valve plug contact material	CuSn
Valve plug contact surface material	Sn
Valve plug contact insert material	PA 66
Material housing valve plug	TPU
Material, knurls	Zinc die-cast, nickel-plated
Sealing material	TPU (Seal molded)

Standards and Regulations

Flammability rating according to UL 94	HB
--	----

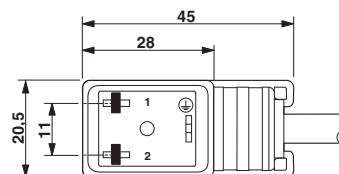
Drawings

Schematic diagram



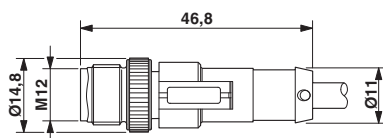
Pin assignment M12 plug, 3-pos., valve connector

Dimensional drawing



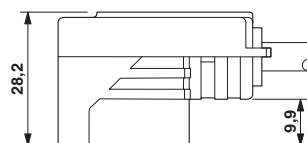
Valve connector, type BI

Dimensional drawing



Plug, M12 x 1, straight, shielded

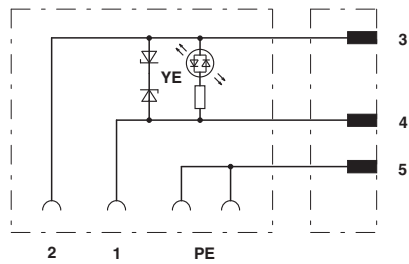
Dimensional drawing



Valve connector, type BI, side view

Sensor/Actuator cable - SAC-3P-M12MS/0,6-240/BI-1L-Z - 1438723

Circuit diagram



Contact assignment of M12 plug and valve connector

Approvals

Approvals

Approvals

CSAus

Ex Approvals

Approval details

CSAus		http://www.csagroup.org/services/testing-and-certification/certified-product-listing/	13631
Nominal current I _N	4 A		
Nominal voltage U _N	24 V		

Phoenix Contact 2017 © - all rights reserved
<http://www.phoenixcontact.com>

PHOENIX CONTACT GmbH & Co. KG
 Flachsmarktstr. 8
 32825 Blomberg
 Germany
 Tel. +49 5235 300
 Fax +49 5235 3 41200
<http://www.phoenixcontact.com>